

Value-Based Health Care at Maastrro

Maastrro Science Day
29-05-2024

Ingrid Kremer, PhD
Project manager Value-Based Health Care

Value-Based Health Care at Maastrro

Why?

What?

How?

Value-Based Health Care at Maastrro

Why?

*Best possible treatment
with the greatest chance of recovery and the fewest
possible side effects*

What?

How?



Maastrro
In the best of hands

Value-Based Health Care at Maastrro



Value-Based Health Care at Maastrro

Why?

- Radiotherapy
 - Rapidly evolving innovations > quality of care
 - Consideration of added patient value needed
 - Evidence for outcomes and costs

What?

How?

- Increasingly scarcer resources

Value-Based Health Care at Maastrro

Why?

- creating patient value = $\frac{\text{patient-relevant health outcomes}}{\text{costs}}$

What?

- Within Maastrro

How?

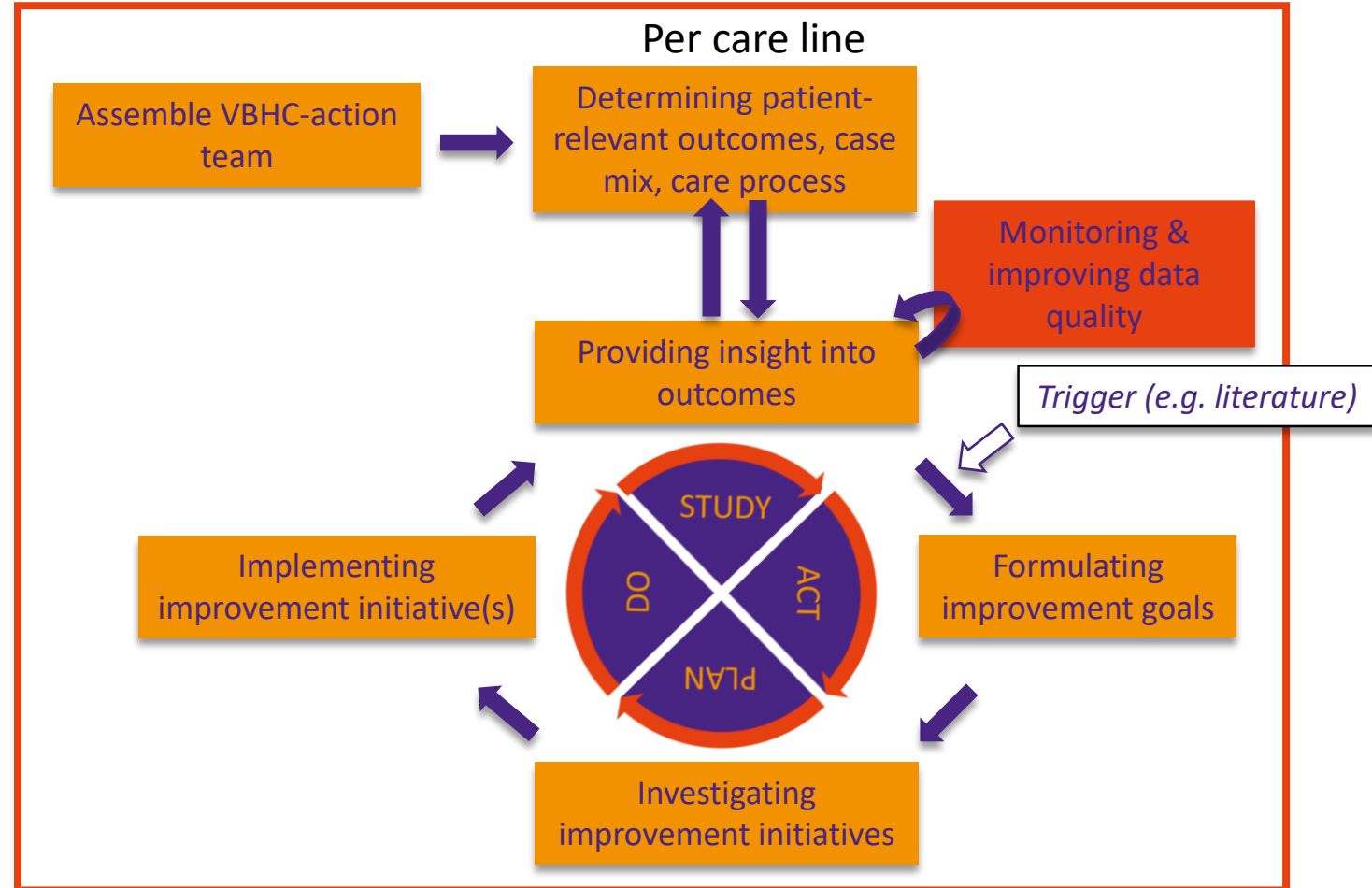
- Patient value
 - First: improve patient-relevant outcomes
 - Second: costs of improving patient-relevant outcomes
- Structurally steering on patient-relevant health outcomes to improve the quality of the care process

Value-Based Health Care at Maastrro

Why?

What?

How?



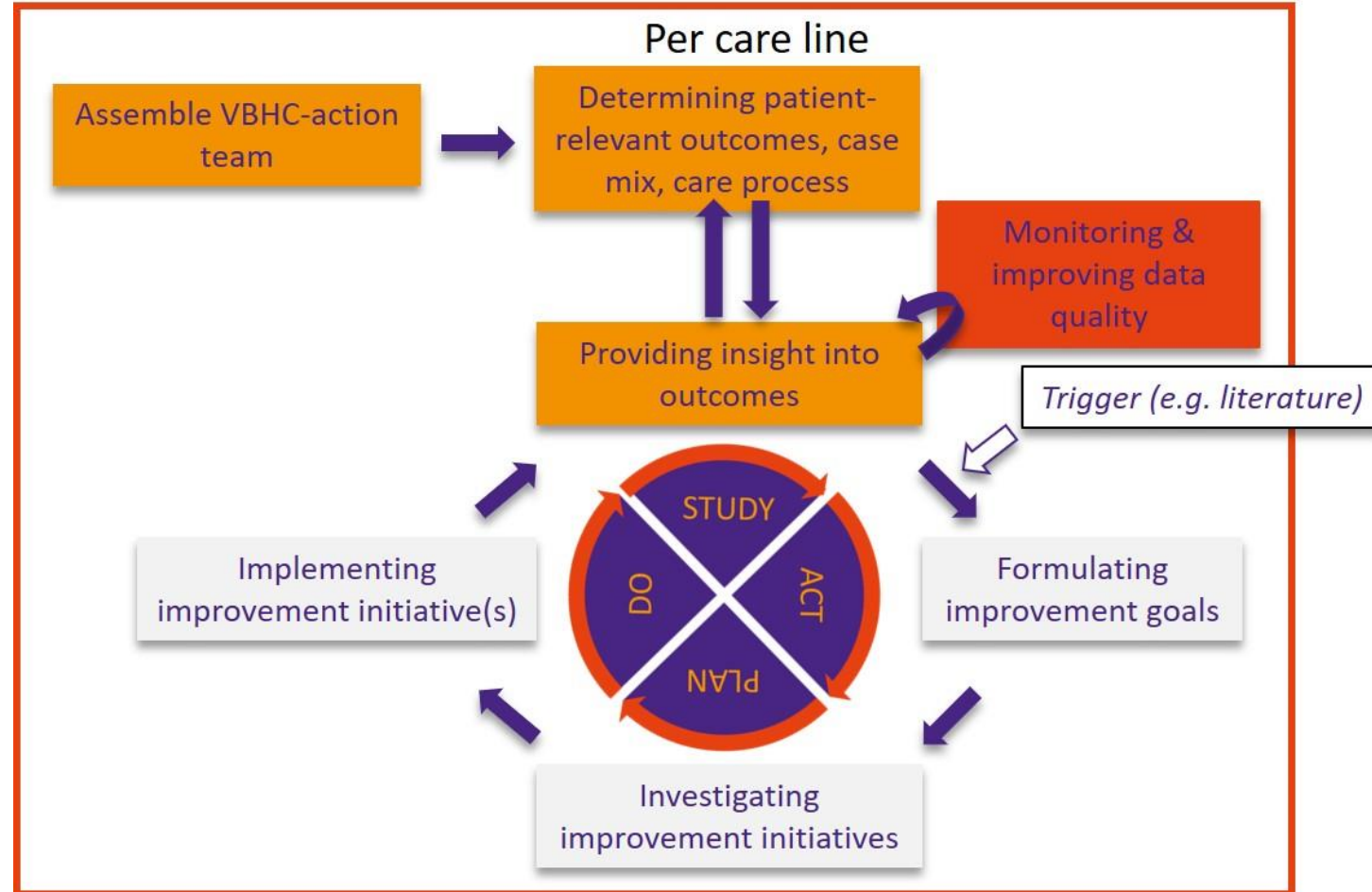
Continuous evaluation of quality of care per tumour type using patient-relevant outcomes

Characteristics of VBHC at Maastrro

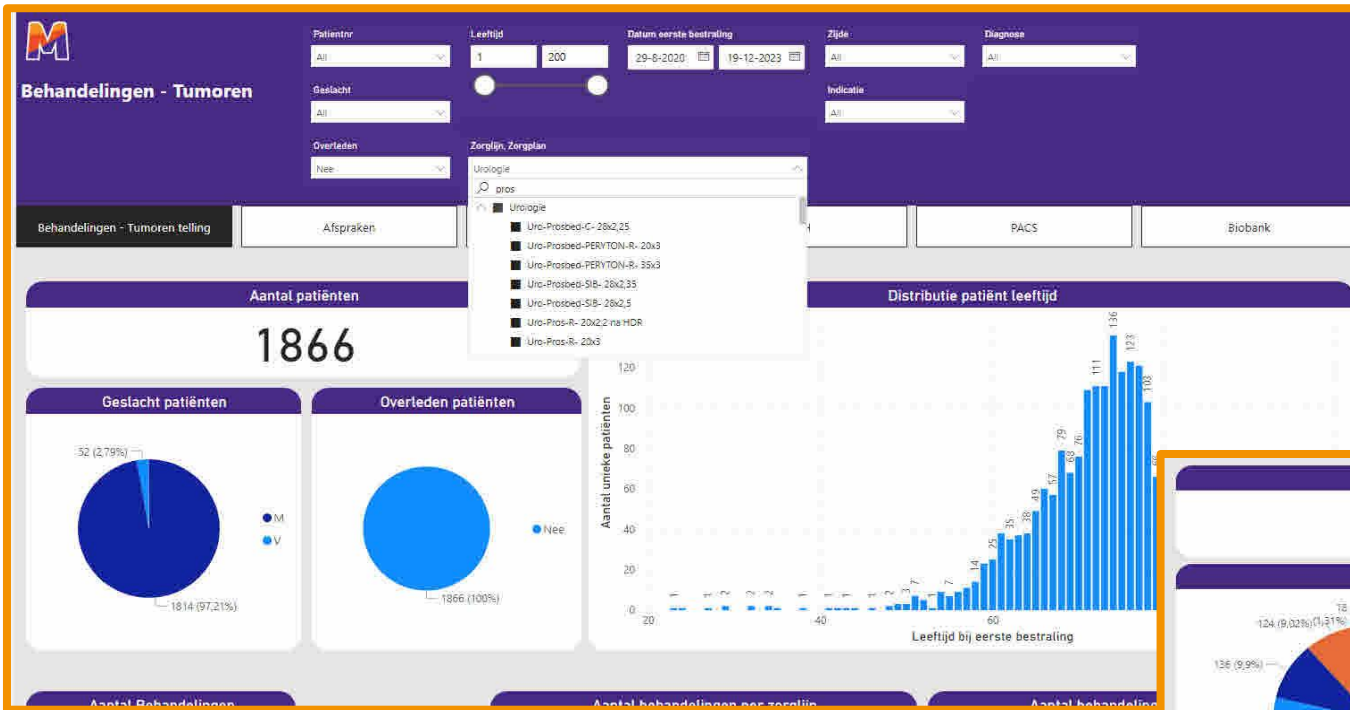
- Use of already registered patient outcomes
- Content-driven: team delivers the content
- In collaboration with project managers, data specialists and patients
- Initially project-based
 - One tumor care line > prostate
 - Focus on enabling steering based on patient-relevant outcome data
 - Test methodology and adjust if needed
 - Setting up structures and conditions for health professionals to continue cycle
- Eventually, per tumor care line

Progress

- ✓ Prioritization of tumor lines based on defined criteria
 - ✓ Start with Prostate
- ✓ Assembling VBHC action team for Prostate tumor care line
- ✓ Formulation of patient-relevant outcomes and case-mix variables > ICHOM outcomes
- ✓ Draft Cohort Exploring Dashboard for re-use of data: insights into availability and quality of data for patient cohort (I&S)

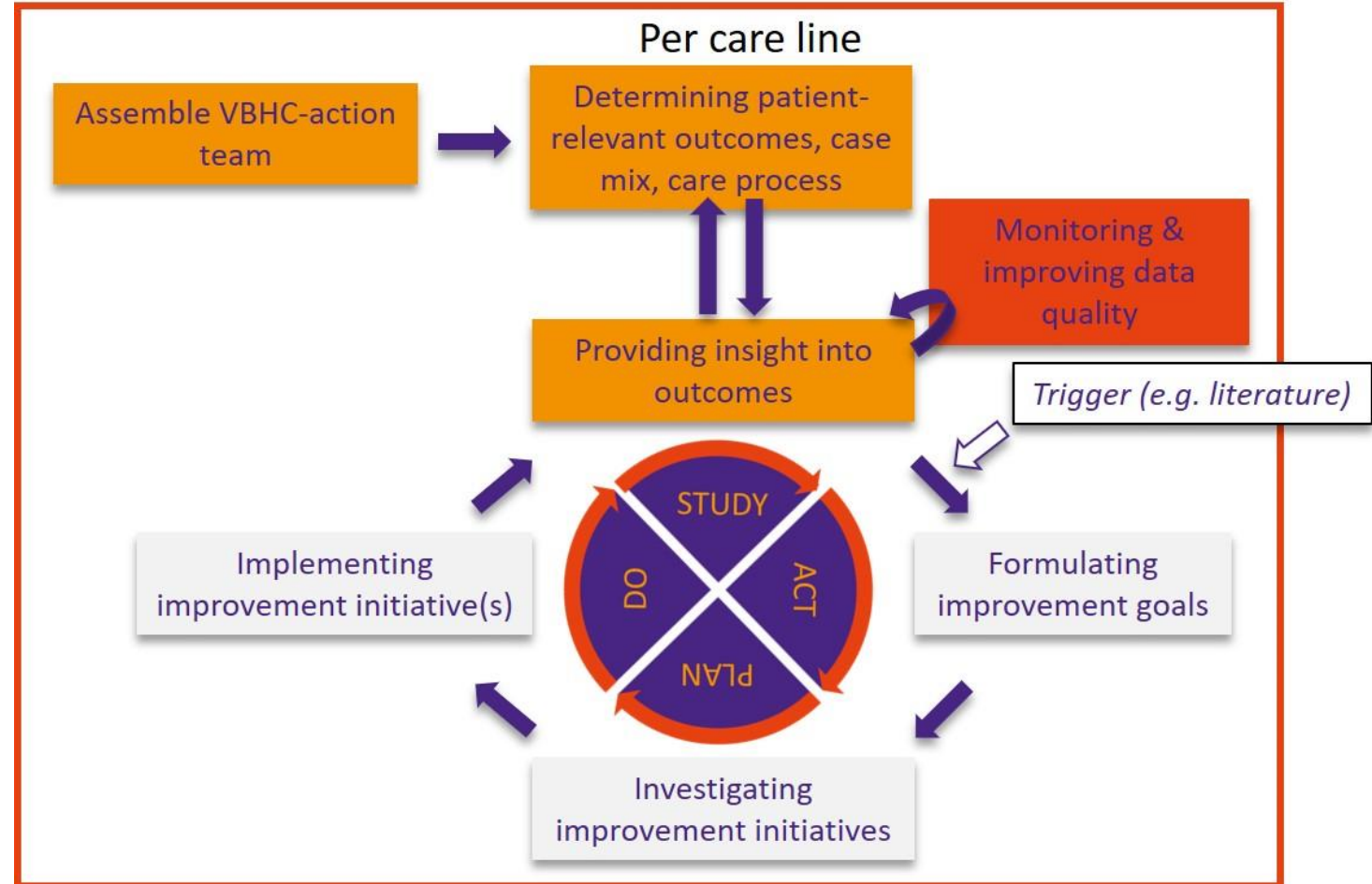


Cohort exploring dashboard - illustration



What is next?

- Present patient-relevant outcome data in useful manner to allow steering
 - Evaluate, continuously monitor and – if needed – improve quality of data
- Map reference values



Take home message

- Value-based Health Care at Maastrro to
 - Bottom-up approach, content-driven
 - Enhance patient value of care
- Supports continuous improvement (LEAN)
- Translate data into useful dashboards
- Set up/strengthen structures to continuously Plan-Do-Study-Act

Award winning!

ValueBased HealthCare | Prize 2024

The Prize that recognizes inspiring VBHC initiatives

